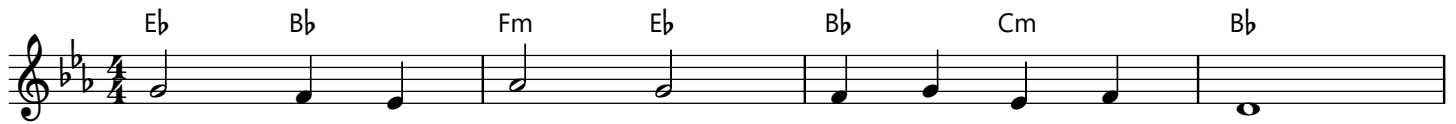


Draw Near and Take the Body of the Lord

Neale / COENA DOMINI



1. Draw near and take the bod - y of the Lord,
2. saved by his bod - y and his pre - cious blood,
3. Our true Re - deem - er, Christ the on - ly Son,
4. off - 'ring him - self for great - est and for least,
5. The vic - tims of - fered by the law of old,
6. now Christ our light, the ran - som of our race,
7. Let us ap - proach with lov - ing hearts sin - cere,
8. Christ, who his faith - ful ser - vants rules and shields,
9. With bread of life he makes the hun - gry whole,
10. Christ Je - sus, first and last, is with us now,



1. and drink his ho - ly blood for you out - poured;
2. our souls re - freshed, we of - fer thanks to God.
3. by cross and blood a might - y vic - t'ry won,
4. him - self the Vic - tim and him - self the Priest.
5. as signs from God, e - ter - nal mys - t'ries told,
6. gives to his own this end - less source of grace.
7. and take the pledge of our sal - va - tion here;
8. to all be - liev - ers life e - ter - nal yields.
9. gives liv - ing wa - ters to each thirst - y soul.
10. to him at end of time we all shall bow.

Inspiration: "Sancte venite, Corpus Christi sumite" from the "Antiphony of Bennchar", 7th cent.
Lyrics: 10.10; John M. Neale, 1818-1866, in his "Medieval Hymns and Sequences", 1851.
Music: COENA DOMINI; Arthur S. Sullivan, 1842-1900, in "Church Hymns", 1874.